

SHERA™

build better, live better



New Products

Board | Wood | SHERA Infillwalll

www.SHERA.com

Index

New Products	3
Deco' Board (Brick, Straight Grain), Antique Wood, Déline, Floor Plank (Coloured)	
Board	13
Ceiling, Wall, Floor, Deco' Board	
Wood	21
Plank, Splendid Plank, Skirt	
SHERA Infillwall	26
Technical Specification	28





SHERA's green heart for sustainable environmental value

SHERA's products emphasize the Green Policy since the beginning. Therefore, we aim at developing Green Products by using energy-efficient and environmentally-friendly technology (Green Technology) at each processing stage to fulfill the needs of modern living while getting along with the rapidly changing world to ensure peaceful living between humans and the nature (Green Living).

SHERA is the first leader in Thailand to develop fiber cement product innovations which can substitute real wood in every function including roof, ceiling, wall, flooring, and decorative wood application until it becomes locally and globally known for our unique works.

Most importantly, **SHERA** is the leading fiber cement innovation producer which has been certified for environmentally-friendly product quality and manufacturing standards by world-leading certification



NEW

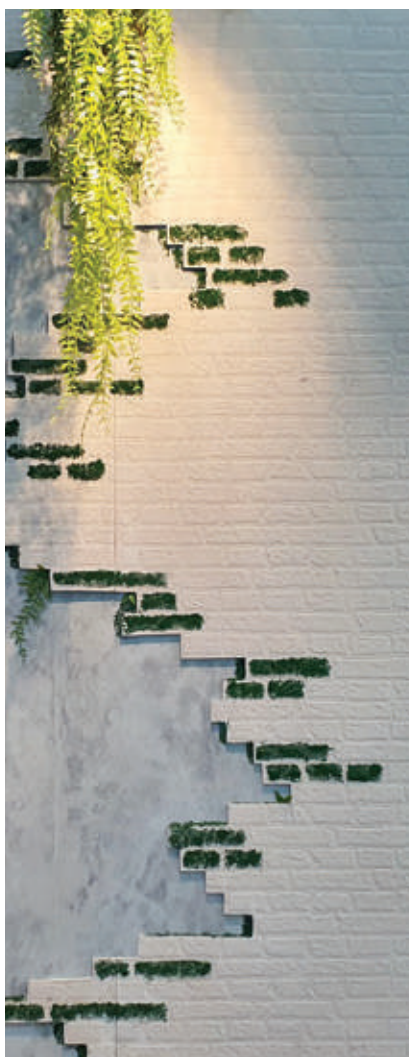
SHERA Deco' Board **BRICK**

Bridge to timeless style



Product Descriptions

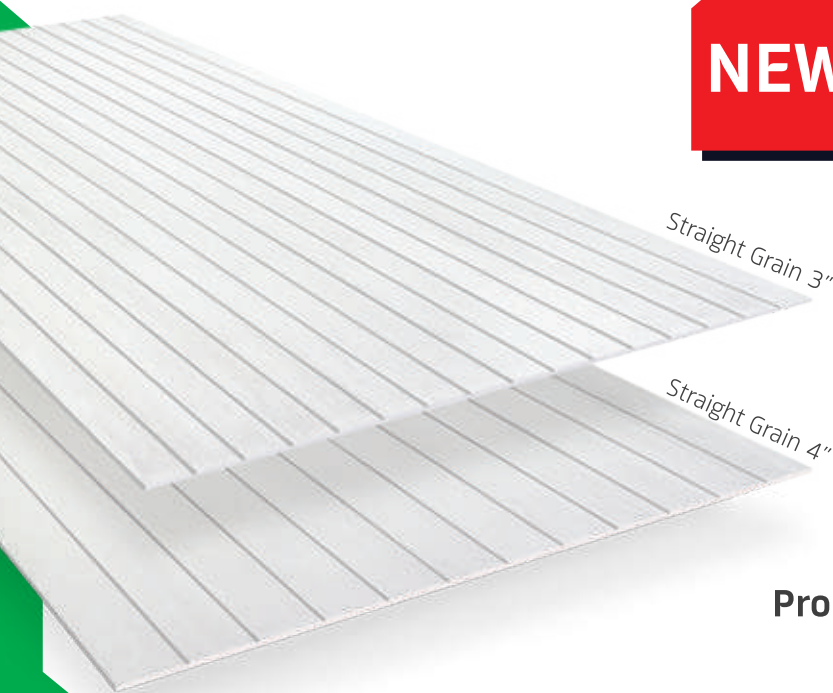
Texture	Size (mm.) (Thickness*Width*Length)	Weight (kg./pc.)	Applicable Area
Brick	6 x 1200 x 2400	27.75	Interior and exterior decoration
	6 x 1220 x 2440	27.91	
	8 x 1200 x 2400	37.05	





SHERA Deco' Board Straight Grain Texture

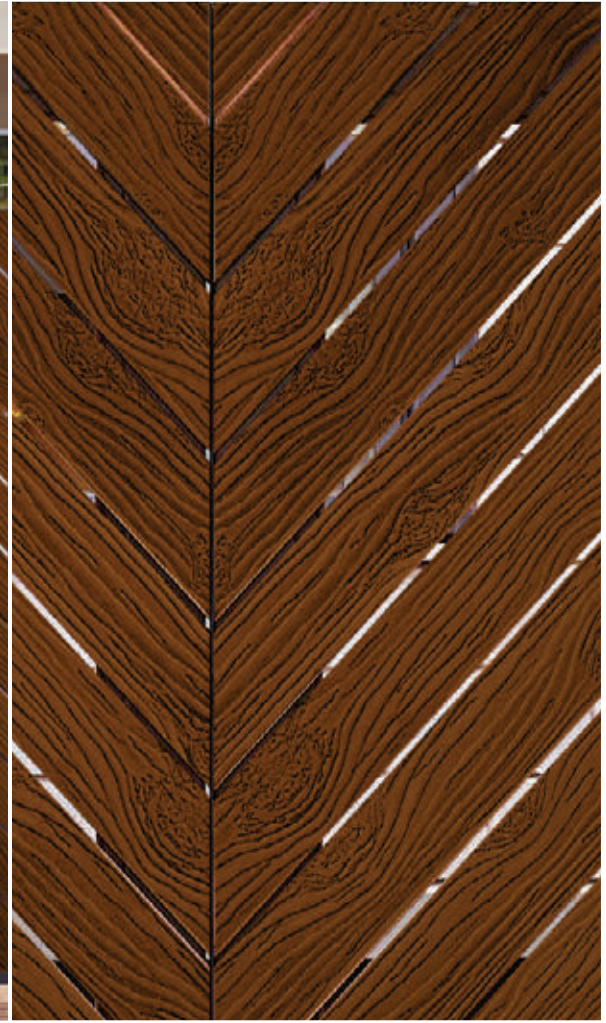
SHERA is the first to express aesthetics from the nature through patterns of wall and ceiling board. With unique properties of *SHERA*, **SHERA Deco' Board** is breathtakingly impressive, durable in any climate, resistant to water, moisture, fire, shock, and soundproof, and meet the requirements of exterior and interior works.



Product Descriptions

Texture	Size (mm.) (Thickness*Width*Length)	Weight (kg./pc.)	Applicable Area
Straight Grain 3"	6 x 1200 x 2400	27.75	Interior and exterior decoration
Straight Grain 4"	6 x 1220 x 2440	27.91	
	8 x 1200 x 2400	37.05	





NEW

SHERA Plank

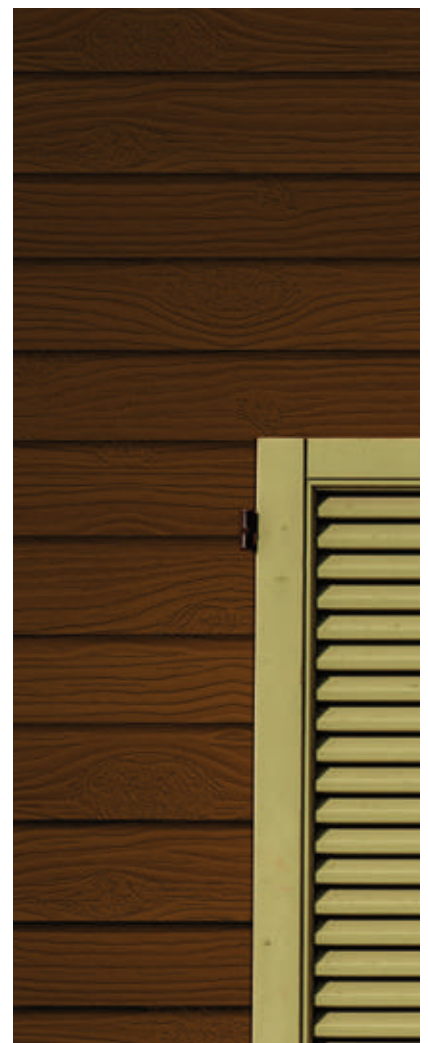
ANTIQUE WOOD

FASCINATE WITH OLD TIME BEAUTY



Product Descriptions

Profile	Texture	Color	Size (mm.) (Thickness*Width*Length)	Weight (kg./pc.)	Quantity (pcs./sq.m.)
Square-Cut Edge	Antique Wood	Uncolored	8 x 150 x 3000	5.4	2.67





SHERA Splendid Plank **DELINE**

DESIGN YOUR OWN LINES

SHERA Splendid Plank Deline is designed for any striking modern architectural style you have in mind. It comes with 5 different grooved lines that can be applied to your indoor and outdoor in many styles that suit you.

Product Descriptions

Profile	Texture	Color	Size (mm.) (Thickness*Width*Length)	Weight (kg./pc.)	Quantity (pcs/sq.m.)
Deline DL00	Smooth	Uncolored	10 x 220 x 3000	8.93	1.64
Deline DL01			10 x 220 x 3000	8.77	1.64
Deline DL02			10 x 220 x 3000	8.60	1.64
Deline DL05			10 x 220 x 3000	8.12	1.64
Deline DX12			10 x 220 x 3000	8.44	1.64



SHERA Floor Plank

SHERA Floor Plank is one of the most trusted flooring brands on the market. It is exactly what construction needs and ideal for both indoor and outdoor applications. SHERA Floor Plank provides you the real feel of wood with cassia texture and straight grain texture. It's resistant to high impact and can be fixed directly on joists, helping you save money on frames and save construction time. In addition, it's termite resistant, long lasting and comfortable to walk on.



*Colors of products shown in pictures may differ from the actual products due to printing system.

Product Descriptions

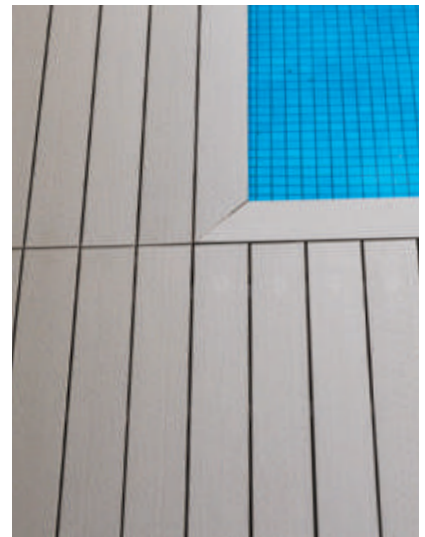


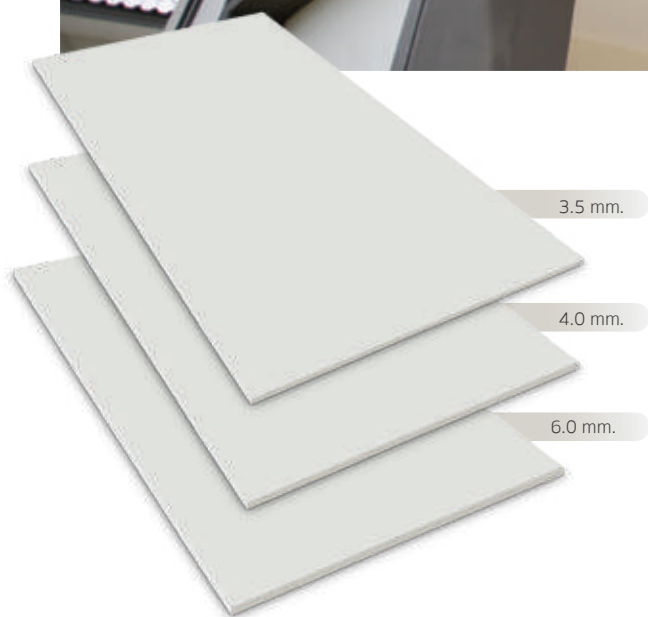
Jasmine White Primer Cassia Texture Merbau Brown Cassia Texture Red Oak Shinelight Cassia Texture



Jasmine White Primer Straight Grain Texture Red Berry Straight Grain Texture

Profile	Texture	Color	Size (mm.) (Thickness*Width*Length)	Weight (kg./pc.)	Quantity (pcs./sq.m.)
V-Cut	Cassia	Jasmine White Primer	30 x 100 x 3000	14.19	3.33
			25 x 150 x 3000	17.75	2.22
			25 x 200 x 3000	23.67	1.67
			25 x 250 x 3000	29.60	1.33
			25 x 300 x 3000	35.52	1.11
		Merbau Brown	30 x 100 x 3000	14.19	3.33
			25 x 150 x 3000	17.75	2.22
			25 x 200 x 3000	23.67	1.67
			25 x 250 x 3000	29.60	1.33
			25 x 300 x 3000	35.52	1.11
V-Cut	Straight Grain	Red Oak Shinelight	25 x 200 x 3000	23.67	1.67
		Jasmine White Primer	25 x 150 x 3000	17.75	2.22
			25 x 200 x 3000	23.67	1.67
		Red Berry	25 x 150 x 3000	17.75	2.22
			25 x 150 x 3000	17.75	2.22





SHERA Ceiling Board

SHERA Ceiling Board is durable and suitable for external soffit and internal ceiling. It's also an ideal application for wet areas such as bathroom, kitchen, garage and eaves, etc. *SHERA Ceiling Board* is tough and strong, non-brittle, non-cracked and doesn't contain any asbestos content. Other properties include water, moisture resistance and bendability as needed, making it a perfect ceiling material for interior and exterior.

Product Information

Profile	Color	Size (mm.) (Thickness*Width*Length)	Weight (kg./pc.)	Quantity (pcs./sq.m.)	Application area
Square-Cut Edge	Uncolored	3.5 x 1220 x 1220	8.14	0.67	Interior Ceiling
		3.5 x 1220 x 2440	16.28	0.34	
		4 x 1220 x 1220	9.30	0.69	Interior and exterior ceiling
		4 x 1220 x 2440	18.61	0.34	
		4.5 x 1220 x 2440	20.90	0.34	
		6 x 1220 x 2440	18.03	0.34	



SHERA Deco Ceiling

Make your decoration look complete and bring nature elements into your spaces as your heart desires with **SHERA Deco Ceiling**. This decorative solution has many outstanding properties including durability in any weather conditions and resistance to water, humidity, fire, impact as well as termites. It's also sound proofing when cutting, hammering or drilling, making installation become easy. So when it comes to expressing your personal style through designs, **SHERA Deco Ceiling** is the answer.

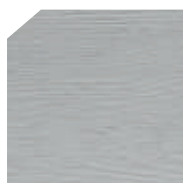
Product Information



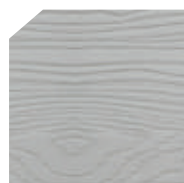
Rocco Texture



Blossom Texture



Cassia Texture



Teak Texture



Cassiano Texture

Texture	Color	Size (cm.) (Thickness*Width*Length)	Weight (kg./pc.)	Quantity (pc./sq.m.)	Application area
Rocco/Blossom	Uncolored	0.35 x 120 x 240	15.77	0.35	Interior and exterior decorative ceiling
		0.35 x 122 x 244	16.28	0.34	
Cassia		0.35 x 120 x 240	15.77	0.35	
Teak		0.40 x 122 x 244	18.61	0.34	
Cassiano		0.45 x 122 x 244	21.39	0.34	



SHERA Wall Board

SHERA Wall Board is an ideal solution to walling, especially designed for indoor and outdoor wall applications. This series comes with a square-cut edge profile for grooved wall and a recessed edge profile for smooth seamless wall. Installation is easy with screw driving, cutting and drilling. Other great properties include durability, resistance to water-humidity-fire-impact and soundproof, therefore it is a perfect choice for walling in residential, hotel, resort, and industrial buildings. *SHERA* Wall Board will bring a good quality of life to homeowners everywhere.

Product Descriptions

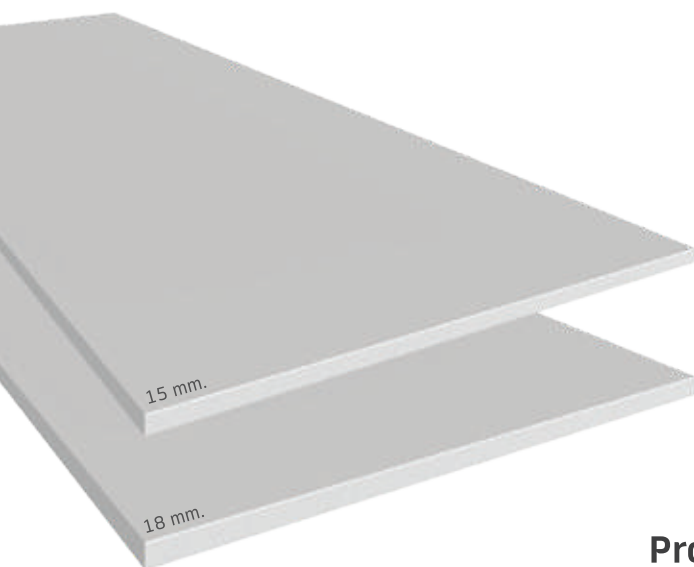
Profile	Size (mm.) (Thickness*Width*Length)	Weight (kg./pc.)	Quantity (pcs./sq.m.)	Application area
Square-Cut Edge	6 x 1220 x 2440	27.91	0.35	Interior and exterior wall
	8 x 1220 x 2440	37.26		
	10 x 1220 x 2440	46.58		
	12 x 1220 x 2440	55.89		
Recessed Edge	6 x 1220 x 2440	27.66		Smooth interior wall *made to order item
	8 x 1220 x 2440	36.99		





SHERA Floor Board

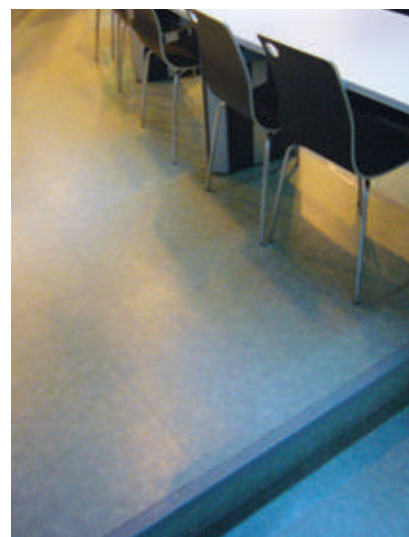
It's time to take fiber cement flooring innovation to the next level with **SHERA Floor Board**. By being of better quality than any other wood cement boards or general plywood, **SHERA Floor board** can ensure durability in any weather conditions, resistance to water-fire-termites as well as the ability to support heavier weight, thus it can be a perfect flooring material throughout the building. Save your time and money by choosing floorboard that's designed for a quick installation. No more excessive spending on framing. Plus you can conveniently apply **SHERA Floor Board** as a substrate for various finishing as well.



Product Descriptions

SHERA Floor Board	Size (mm.) (Thickness*Width*Length)	Weight (kg./pc.)	Application Area
Square Cut Edge	15 x 1220 x 2440	69.32	Indoor and outdoor
For elevated floor	18 x 1220 x 2440	83.19	

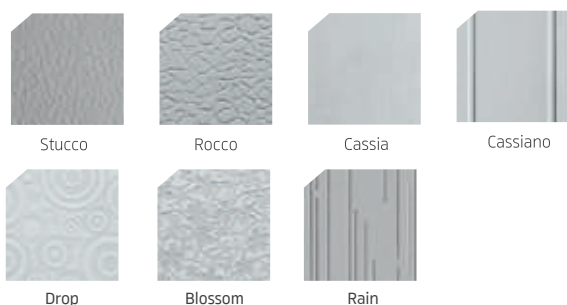
Available for Metric size.





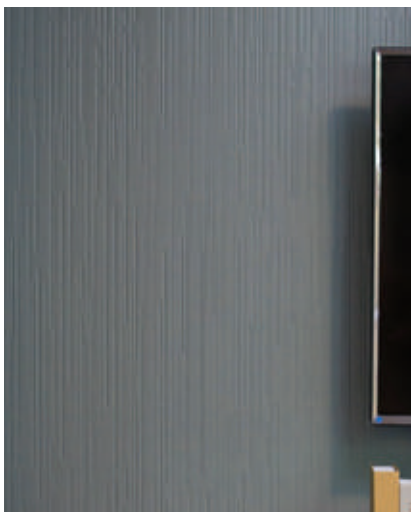
SHERA Deco' Board

Allow your space to show off its strikingly beautiful texture and architectural dimension with **SHERA Deco Board**. These beautiful patterns are crafted to go with several designs, making your home decor project more unique and outstanding than ever. **SHERA Deco Board** comes with a full range of properties including resistance to weather, water, moisture and fire which are the key components in terms of functionality. It's also soundproof and impact-resistant, which is ideal for both internal and external decorative applications. Installation is easy with screwing, cutting and drilling. In a word, **SHERA Deco Board** gives you a very convenient way to make your room look perfect.



Product Descriptions

Texture	Size (mm.) (Thickness*Width*Length)	Weight (kg./pc.)	Applicable Area
Stucco / Rocco / Cassia / Cassiano	6 x 1220 x 2440	27.91	Interior and exterior decoration
Cassia / Cassiano	8 x 1220 x 2440	37.21	



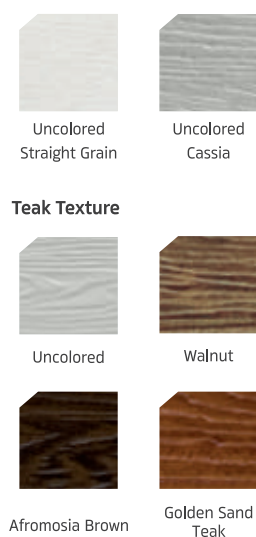


SHERA Plank

The first product that comes into everyone's mind when mentioning **SHERA** is **SHERA Plank**, an alternative to wooden décor that gives you the same warmth you would get from real wood texture. With a full range of features from low shrinkage and no wrapping to termite-resistance, you can create a cozy atmosphere inside your home with this natural glow.

SHERA Plank is suitable for interior and exterior wall decorations. It also comes in several sizes and colors to suit your style and preferences: uncolored, painted and Shine Light Profiles.

Product Descriptions



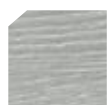
Profile	Texture	Color	Size (mm.) (Thickness*Width*Length)	Weight (kg./pc.)	Quantity (pcs./sq.m.)
Square-Cut Edge	Straight Grain	Uncolored	8 x 150 x 3000	5.40	2.67
			8 x 150 x 4000	7.20	2.00
	Cassia	Uncolored	8 x 200 x 3000	7.20	2.00
			8 x 200 x 4000	9.60	1.50
	Teak	Golden Sand Teak			
		Afromosia Brown			





SHERA Splendid Plank

Another step of modern wall application which perfectly combines natural look with splendid designs. Its profiles and sizes can fulfill the needs of all designs with perfect assembly method that ease your concern of screw marks.



Uncolored
Cassia Texture



Uncolored
Smooth Texture



Beech
Straight Grain Texture

Product Descriptions

Profile	Color	Size (mm.) (Thickness*Width*Length)	Weight (kg./pc.)			Quantity (pcs/sq.m.)	Section image
			Cassia	Smooth	Straight Grain		
Croton	Uncolored	10 x 150 x 300	5.65	5.65	-	2.57	
Yellow Flame	Uncolored/ Beech				5.65		



Beech, Straight Grain Texture



Cassia Texture



Cassia Texture



Smooth Texture



Straight Grain Texture

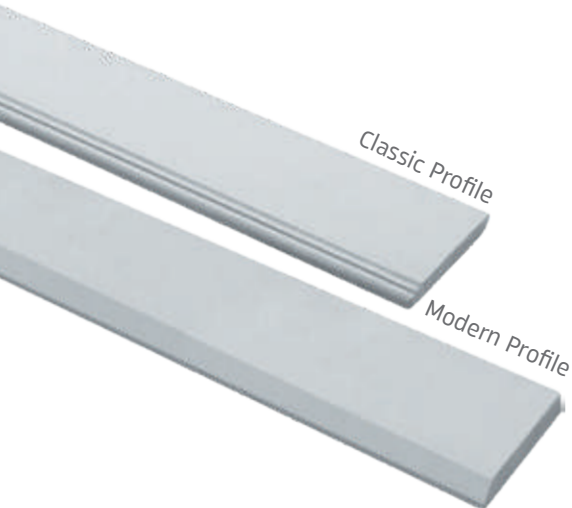


Cassia Texture

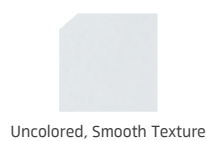


SHERA Skirt

Cover joints between the wall and the floor with **SHERA Skirt** and enhance the feelings of nature in your home with texture and color of real wood. **SHERA Skirt** comes with great properties ensuring durability, termite free, no rotting and no swelling from excess moisture. Using **SHERA Skirt** as a baseboard will not only help prevent stains on the wall while cleaning, but also give a neat and beautiful finish to your design.



Product Descriptions



				Size (mm.) (Thickness*Width*Length)	Quantity (pcs./sq.m.)
Profile		Texture	Color		
Skirt	Classic	Smooth	Uncolored	12 x 100 x 3000	5.33
	Modern				



Installing skirts along stair steps not only creates a beautiful finish along the edge but also gives visual cues on a flight of stairs, keeping everyone in your home safe.



SHERA *infillwall*

Why SHERA infillwall?

SHERA infillwall The Fast-Track Solid Wall Solution

Nowadays, brick wall has been used widely in construction work although it still has many

concerned points. For example, it takes long time to complete, creates a dirty site because of wet construction system and materials are also heavy and inconvenient to transport. In addition, skillful craftsmen are required. Many defects often occur like cracking or rough and uneven surfaces because bricklaying and cement rendering are not standardized. Furthermore, it is difficult to control loss of materials during construction, resulting in high levels of wastage.

manufacturer of green innovative fibre-cement, is acknowledged in over 40 countries throughout the globe under the brand name "SHERA". Recently, SHERA has developed a new wall system, "*SHERA infillwall*" aiming to offer better choice to replace traditional masonry wall by implementing SHERA board as key component of the system.



Technical Specification

There are alternative ways to use SHERA infillwall, depending on the objective of the areas. For example, in bedrooms where the wall is required to have a high STC value, kitchen and living room where built-in decoration is required by hanging materials on nails, the density of lightweight concrete can be varied to suit the means.

Properties	Standard Test	Density of lightweight concrete (kg / m)			
		350	500	700	900
Compressive Strength		37 ksc	40 ksc	45 ksc	49 ksc
Nail Hanging		15 kg	20 kg	30 kg	40 kg
Fire Resistance	BS 476 Part 22	2 hr.	2.5 hr.	3 hr.	3.5 hr.
Sound Insulation	ASTM E90-97	35 dB	40 dB	45 dB	50 dB
Impact Energy	BS5234 Part 2	200 N.m	250 N.m	300 N.m	350 N.m
Durability *	ASTM C1185	-	-	PASS	PASS

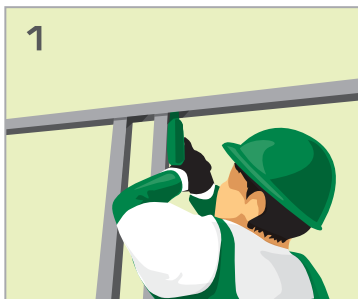
*Density test at 700 and 900 kg/m³ by PSB Corporation, Singapore



Wall Comparison of Key Features

Key Features	SHERA infillwall	Precast concrete wall	Brick wall	Gypsum wall
Thickness	8.7 cm	14 cm	10 cm	9.5 cm
Weight	100 kg/m ²	300 kg/m ²	180 kg/m ²	70 kg/m ²
Wall Body	Solid	Solid	Solid	Hollow
Method	Semi- dry	Wet	Wet	Dry
Fire Rating	3-4 hr	1-2 hr	1-2 hr	1-2 hr
Compressive Strength	43 - 60 ksc	n/a	30-70 ksc	n/a
Sound Insulation	37 - 60 ksc	52 dB	38 dB	32 dB
Surface Flatness	Excellent	Fair	Fair	Excellent
Moisture Resistant	Excellent, No efflorescence	Good	Good, Easy efflorescence	Poor
M&E works	Easy	Pre-Embedded	Difficult	Easy
Cleaness	Clean site	Wet and mess site	Wet and mess site	Clean site
Construction Speed	12 m ² /people,day	2 m ² /people,day	6 m ² /people,day	15 m ² /people,day
Earthquake resistant	Good	Not good	Not good	Good

Installation steps of SHERA infillwall system



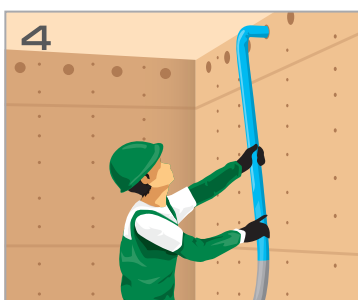
1
Install SHERA frame vertically with spacing 30-40 cm.



2
Fix SHERA infillboard (Recessed edge) to SHERA frame using SHERA screw. Leave one side where M&E service installation is needed.



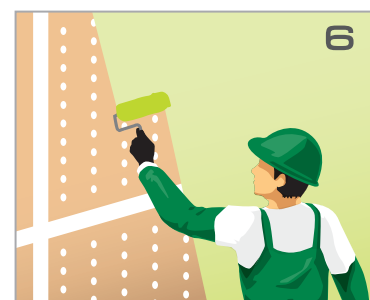
3
Next, install electrical wiring, plumbing and position electrical blocks or fix window and door frames before completing another side of SHERA infillboard.



4
Mix lightweight concrete following mixed ratio. Apply to the hollow core by concrete pumping machine.



5
Apply SHERA jointing compound for finishing joints and finishing screws, then leave it completely dry and sand the surface.



6
Paint or finish with ceramic tiles, wallpaper, laminate or other decorative materials.

Technical Specification

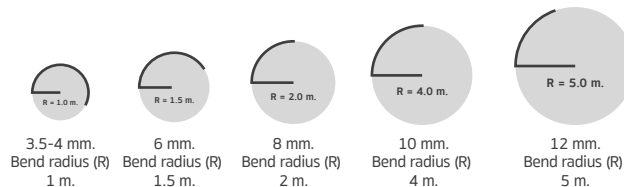
SHERA Board

Physical Properties	Standard	Unit	Test Result
Thickness Tolerance	ASTM C1185	%	+ 6%
Density	ASTM C1185	Kg/cm ³	1350 + 50
Modulus of Rupture	ASTM C1185	Mega Pascal	> 7 MPa (Wet)
Modulus of Elasticity	-	Mega Pascal	> 3000 MPa (Wet)
Water Absorption	ASTM C1185	%	< 35%
Moisture Content	ASTM C1185	%	< 15%
PH Value	-	-	7-8
Thermal Conductivity	ASTM C177	Watt/m Kelvin Degree	0.15 W/m.K
Acoustic Insulation	ASTM E90-97	Decibel	STC = 30 dB (6 mm single board) STC = 50 - 60 dB (10 mm composite wall)
Moisture Movement	ASTM C1185	%	+ 0.04%
Length change due to water absorption	JIS A5414	%	< 0.10 %
Water Tightness	ASTM C1185	-	Pass
Fire Resistance Properties			
Ignitability	BS476 Part 5	-	Pass
Fire Propagation Index	BS476 Part 6	-	I = 0.4
Surface Spread of Flame	BS476 Part 7	-	Class 1
Fire resistance of partitions	BS476 Part 22	minute	30-180
Smoke Index	ASTM E84-00a	-	0
Single Burning Item	EN 13823 : 2002	-	Pass
Fire Classification	EN 13501-1 : 2002	-	A2-s1,d0
Building Combustibility	CNS 6532	-	non-combustibility
Durability Properties			
Freeze/Thaw resistance	-	-	Pass
Warm water resistance	ASTM C1185	-	Pass
Heat/Rain resistance	and BS EN 12467:2000	-	Pass
Soak/Dry resistance	BS EN 12467:2000	-	Pass

*Remark : SHERA BOARD has passed the test by Australia/New Zealand Standard (AS/NZ 2908:2:2000) and EU Standard (BS EN 12467: 2000) by PSB Corporation Singapore and TIS 1427-2540 certifying fiber-cement tiles in Thailand.

Bend Radius

SHERA Board is tough and highly flexible, bendable without applying water.



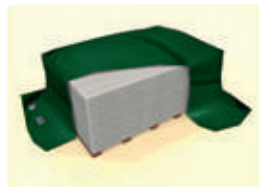
Horizontal bend radius of the board of each thickness

Selection for Application

Types of Application	Thickness (mm)								
	3.5	4	6	8	10	12	15	18	20
Interior ceiling	●	●							
Eaves/Celling/Arch		●	●						
Bending Wall/Interior Partition			●	●					
Subroof/Sunshade			●	●	●	●			
General exterior wall/Wet area				●	●	●			
High-rise building wall/Exterior building board					●	●			
Underlayment				●	●	●			
Raised Floor							●	●	●
Weight (kg/ sq.m.)	5.36	6.12	9.32	12.42	15.52	18.63	22.42	26.91	29.90

Movement and Piling

Always raise the board vertically by raising the two ends



Pile the boards up at shady and on the flat and dry ground. The boards should be supported by 5 pieces of wood of 1.5"x3" wide as indicated in the schedule. Do not install and paint the board in wet condition.

Thickness (mm.)	Piling not exceeding (pcs)
4	300
6	225
8	150
10	120
12	105
15	90
18	75
20	60

Technical Specification

SHERA Wood

Properties	Standard	Unit	•SHERA Plank •SHERA Strip, Teak Texture	•SHERA Splendid Plank	•SHERA Skirt •SHERA Laminate Skirt •SHERA Fence •SHERA Baluster	•SHERA Ceiling Skirt	•SHERA Strip, Smooth Texture •SHERA Strip, Straight Grain Texture	16 mm thick •SHERA Eaves •SHERA Stair Tread •SHERA Décor Wood	•SHERA Filler Unit	25 mm thick •SHERA Floor Plank •SHERA Décor	•SHERA Floor Plank 30 mm thick •SHERA Stair Tread	•SHERA Door Frame
------------	----------	------	--	-----------------------	--	----------------------	--	--	--------------------	---	--	-------------------

Physical Properties

1. Thickness tolerance	ASTM C1185	mm.	+/- 0.50	+/- 0.60	+/- 0.72	+/- 0.48	+/- 0.48	+/- 0.96	+/- 0.50	+/- 1.50	+/- 2.0	+/- 2.0
2. Density	ASTM C1185	kg/m ³	1300-1400	1250-1350	1300-1400	1300-1400	1300-1400	1300-1400	1300-1400	1300-1390	1300-1390	1300-1390
3. MOR (Avg)	ASTM C1185	MPa	-	≥ 9 (WET)	-	-	-	-	-	-	-	-
4. MOR (MD)	ASTM C1185	MPa	-	-	≥ 12 (EMC)	≥ 12 (EMC)	-	≥ 12 (EMC)	-	≥ 11 (EMC)	≥ 11 (EMC)	≥ 11 (EMC)
5. Toughness (MD)	-	J/m ²	≥ 12 (EMC)	-	≥ 10 (EMC)	≥ 7 (EMC)	≥ 12 (EMC)	≥ 10 (EMC)	≥ 9 (EMC)	≥ 12 (EMC)	-	n.a.
6. Water Absorption	ASTM C1185	%	≤ 35	≤ 35	≤ 35	≤ 35	≤ 35	≤ 35	≤ 35	≤ 35	≤ 35	≤ 35
7. Moisture	ASTM C1185	%	≤ 15	≤ 15	≤ 15	≤ 15	≤ 15	≤ 15	≤ 15	≤ 15	≤ 15	≤ 15
8. pH value	ISO 10390:2005		7	7	7	7	7	7	7	7	7	7

Fire Resistance Properties

9. Non-flammability	BS476 Part 4		Pass	Pass	Pass	Pass	Pass	Pass	Pass	Pass	Pass	Pass
10. Inflammability	BS476 Part 5		Pass	Pass	Pass	Pass	Pass	Pass	Pass	Pass	Pass	Pass
11. Fire Propagation Index	BS476 Part 6		Pass	Pass	Pass	Pass	Pass	Pass	Pass	Pass	Pass	Pass
12. Surface Spread of Flame	BS476 Part 7		Pass	Pass	Pass	Pass	Pass	Pass	Pass	Pass	Pass	Pass

Durability Properties

13. Freeze / Thaw Resistance	ASTM C1185		Pass	Pass	Pass	Pass	Pass	Pass	Pass	Pass	Pass	Pass
14. Warm Water Resistance	ASTM C1185		Pass	Pass	Pass	Pass	Pass	Pass	Pass	Pass	Pass	Pass
15. Heat / Rain Resistance	ASTM C1185		Pass	Pass	Pass	Pass	Pass	Pass	Pass	Pass	Pass	Pass
16. Soak / Dry Resistance	BS EN 12467		Pass	Pass	Pass	Pass	Pass	Pass	Pass	Pass	Pass	Pass

Testing Institutions



ASTM C 1186 - 01
AS/NZS 2908.2 : 2000
ISO 8336 : 1993



SHERA Wood Storage



- Do not stack *SHERA* Wood Product more than 100 cm high and a piece of wood should be put under *SHERA* wood product each 50 cm height along the width of *SHERA* Wood Product.
- SHERA* Wood Product should be stacked in a dry, flat place and covered with canvas or plastic to ensure equilibrium moisture content prior to installation. Do not install *SHERA* Wood Product in wet condition as it may cause cracks due to stretching or shrinkage at the gaps screw or nail holes.



Environment Product Declaration: EPD

(Environmental Product Declaration (EPD), Environmental Label under ISO 14025 and EN 15804 certifying the environmentally-friendly manufacturing process upon inspection by the globally accepted central committee, which ensures that our products are of international standards, safe and fit for use.



U.S. Green Building Council

Adds credits to buildings which contributes to LEED certification by U.S. Green Building Council



License No.041-006
Made from 30% Recycled Materials

First of Thailand certified the Singapore Green Label

We are the first manufacturer in Thailand obtaining Green Label Certificate from Singapore which certifies the use of environmentally-friendly materials



First Carbon Label certified

We are the first manufacturer in Thailand obtaining Carbon Label Registration Standards from Greenhouse Gas Management Organization (Public Organization) and Thailand Environment Institute Foundation



Most admired brand of wood substituted product for 9 years in a row

Rewarded from marketing research of the most trusted brand and consumers' buying decision factors by BrandAge magazine together with leading academic institution to survey respondents nationwide.

Mahaphant Fibre Cement Pvt Ltd
4-6, D.S. Udyog Bhavan, Veera Desai Road, Andheri (W),
Mumbai 400 053, India

T : +91-22-2674 4343, +91-22-2674 4646 | F : +91-22-2673 4115
E-mail : info@shera.in Instagram: [@sheraindia](https://www.instagram.com/sheraindia)

Colors of products shown in pictures may differ from the actual products due to printing system.
We reserve the right to modify any of the information in this document without prior notice.
Version : 2021

www.SHERA.com



Website : **SHERA**



IG: **@sheraindia**